



BOWERY THEATRE

Technical Specifications

The Bowery Theatre

St Albans Community Centre

33 Princess Street, St Albans Vic 3021

03 9249 4600

Technical specifications for the Bowery Theatre may change without notice.
As of December 2020.



Technical Specifications

Contents

Stage Material	2
Stage Dimensions	2
Seating	2
Seating Bank Accessibility	3
Seating Arrangements / Venue Flexibility.....	3
Dressing Rooms.....	3
Laundry Facilities	3
Green Room	3
Drapery	4
Cyclorama	4
Grid	4
Lighting	4
Console	4
Dimmers.....	5
Light Fixtures	5
Audio Visual	6
Sound	7
Console	7
Ancillary Audio Equipment (Microphones & Other)	8
Additional Equipment.....	8
Talk Back	8
Program Relay	9
Paging	9
Access Equipment.....	9
Loading Dock	9
Photos and Plans	9

Stage Material

Floor	Stage black, flat, sprung floor. Weathertex 9.5mm wooden sheeting (3.6m x 1.2m sheets)
Uniform Distributed Load	750kg/square metre and 10kN point load.
Tarkett	No tarkett available for dance.

Stage Dimensions

Black Box style performance space. Seating bank can be extended or retracted for versatile use of the venue. The standard rig comes without masking.

Maximum Stage Space (without masking –upstage wall to seating bank [L] and leg to leg [W]).	7.5m (L) x 8.4m (W)
Stage Space (with masking – measured house curtain to rear tab [L] and leg to leg [W])	5m (L) x 8.4m (W)
Venue Space – wall (L) to wall (W) (includes auditorium when seating bank is retracted)	16.5m (L) x 12.4m (W)
Auditorium/Seating Space (front edge of seating bank to back wall of auditorium)	7.74m (L) x 12.4m (W)

Seating

202 seats on a tiered/raked retractable seating bank. Seating bank CANNOT be partially retracted.

Extended Seating Bank (measured front end of seating bank to back wall [L] and wall to wall [L])	8.8m (L) x 12.35 (W)
Stored Depth (front of seating bank to back wall when retracted)	1.4m (L) x 12.35m (W)
Height of Rear Platform (top level to auditorium floor)	2.85m (H)

Seating Bank Accessibility

Ground Floor	Flat floor from the foyer into the theatre. Three wheelchair positions are available in Row A. Two seats remove on OP for 1 wheelchair space and 4 seats remove on PS for 2 wheelchair spaces.
Seating Bank steps	There is one step up from ground level onto the seating bank, and steps between each row thereafter.
First Floor	There is a lift from ground floor to first floor in the foyer. After entering the theatre from the top door, there are steps down into the seating bank.

Seating Arrangements / Venue Flexibility

There is no access to the auditorium from the first floor when the seating bank is retracted.

Seating Bank General admission or assigned seating options available Seating bank fully extended	202 seats
Cabaret Style Seating bank fully retracted	80 – 120 (approximate number – capacity depends on furniture sizes)
Standing Room Seating bank fully retracted	220 (legal capacity in the venue with no seating bank, no stage)

Dressing Rooms

2 x dressing rooms. Each dressing room is equipped with a toilet, shower, mirrors, overhead make up lights, costume racks, show audio relay and paging and a show relay monitor.

Dressing Room 1	Up to 5 people (3.1m x 0.5m table space)
Dressing Room 2	Up to 6 people (4m x 0.5m table space)

Amenities**Laundry Facilities**

Front load washer, front load dryer, sink, ironing board and iron.

Green Room

Filtered water, on-demand boiling water, temperature control, microwave, bar fridge/freeze and kettle.

Paging, show relay monitor and free to air TV.

Drapery

House Curtain	6.9m (W) x 5.5m (L) (x2 – split at centre) 0.4m central overlap Black wool – 50% fullness French action – hand operated from DSPS
Stage Tabs (travellers)	Upstage and midstage 6.5m (W) x 5.5m (L) (x2 – split at centre) 0.4 m central overlap Black wool – 50% fullness French action – hand operated from PS.
Masking Masking is not included in the standard rig. Available upon request.	On tracks and rotators when installed - static 2m (W) x 5.5m (L) (x4 pairs) Black wool – 50% fullness

Cyclorama

White filled cloth. Tied to the most US bar in the grid. Hangs from grid to stage and can cover the entire length of the back wall. Standard rig: the cyc is folded back to not obstruct the US entry doors. There is a 300 mm (H) x 9600 mm (W) black wooden ground row fascia masking bottom pocket of the cyc. There is a flat black wool border 300 mm (H) x 12400 mm (W) at the top of the cyc.

Grid

Fixed grid	5.3m (H) stage to grid 5.9m (H) stage to ceiling
	6 x 13 LX bars (see plans)
	4 x LX bars with power, lighting and audio patching, green power and data (2 FOH and 2 onstage)
Safe Working Load	50kg loading per linear metre and 250kg load per pipe

Lighting

Console

ETC ION XE20 2K Lighting Console with 2048 Outputs/Parameters & 20 inbuilt Faders
Monitors – 2 x Dell 24" Touchscreens

1024 DMX Channels

Protocol – DMX512 over STP data cabling

2 x DMX splitter – Ethercon RJ45 compatible (10 x outputs)

Dimmers

4 x LSC Gen VI Dimmers (48 x 2500 VA capacity [2.5kW])

Capable of hot power or dimmable power

Patch Panel – 96 x piggyback plugs (10 amps each)

Light Fixtures

All lamps have safety chains, hook clamps and piggy back power leads.

14 x Selecon Acclaim Axial Zoomspot Profiles	600w 22/44 beam angle with gel frames and shutters
6 x ETC Source 4 Juniors Zoom Profile	575w 25-50 beam angle with gel frames and shutters
12 x Selecon Acclaim Fresnels	650w 6-60 beam angle with gel frames and barn doors
12 x Par 16 Birdies	240v With gel frames
12 x Chauvet Slimpar Pro	LED RGBWA+UV With gel frames
2 x Movers	Chauvet 475Z zoom Spot-Intimidator
16 x ProShop LEDNIT Par Tri-12	LED RGBA
10 x ShowPro LEDCYC100 Units	LED RGBWA
6 x Chauvet Freedom Flex H4 IP	LED RGBWA+UV
2 x Pin spots beamz 12w	LED RGB
1 x hazer	Martin/Jem compact hazer Pro
Smoke Machine	1 x Jem ZR 25 fogger
Mirror Ball	24" with motor on a hook clamp
Booms	6 x booms - Boom arms TBC

Audio Visual

Projector	1 x 7000 ANSI Digital Projector (Panasonic PT-DW750ES) with standard lens
	Resolution – WXGA (1920 x 1200)
	Input connections – HDMI, VGA via Crestron control RS232 LAN
Projection Screen Available upon request only. Standard projection onto cyc.	1 x Motorised Video Screen (Technics Electricinema) 150" (381cm), remote control and contact closure
DVD Player 1 x Panasonic DP-UB420 Ultra HD Blu-ray Playback (4K/HDR)	2 x HDMI Output 2 x USB Ports Wifi and LAN
Vision Switcher 1 x ROLAND V-40HD 4 x Multi-Format Channels from 12 Inputs HDMI / Component / Composite Inputs	Inputs 4x HDMI Type A 4x RGB/Component on HD DB-15 4x Composite on BNC 1x 1/4" TRS phone type balanced/unbalanced pair 1x Tally on HD DB-15 (max input: 12 V/200 mA, open collector type) 2x MIDI on 5-pin DIN (In / Out / Thru) 1x RS-232C on 9-pin D-sub 1x USB type A (host, for USB storage)\ Outputs 2x HDMI Type A (output 1 / 2) 2x RGB/Component on HD DB-15 (output 1 / 2) 1x Composite on BNC 1x Preview on HDMI Type A
Filming Equipment 2 x Panasonic HC-PV100	Inputs 2 x XRL Outputs 1 x HDMI 2 x SD Card reader

Tripods 2 x Manfrotto Kit Video 190XV Camera Audio 2 x Sony Electret Condenser Mic 2 x Sennheiser XSW-D Lavalier Set	- Super-Cardioid - Omni-Directional

Sound

Console

Yamaha QL1 Digital Console
32 x analogue balanced mono inputs
16 x faders (32 channels)
16 x Outputs
USB Playback and recording

Recording Audio

Zoom H6
4 x XLR/TRS inputs (Stereo feed from the Yamaha QL1)
1 x Shotgun Mic (SGH-6)
1 x MS Stereo Mic (MSH-6)
1 x XY Stereo Mic (XYH-6)

The Bowery Theatre is capable of 5.1 surround sound. This must be discussed with the technical team.

FOH Speakers	2 x QSC KW 152 Speakers Configuration 15" 2 way Frequency response (-6dB) 47Hz – 18Hz Nominal coverage – 60 degrees axisymmetric Maximum SPL – 133dB peak
Subwoofer	1 x QSC KW181 1000w powered subwoofer Frequency response (-10dB) 37Hz to 129Hz Maximum SPL1 – 135 dB peak Available upon request
Foldback	2 x QSC K10.2 Configuration 10" 2 way Frequency response (-6dB) 56Hz – 20 kHz Output 130dB Normal coverage – 90 degrees axisymmetric
	4 x QSC K10

	Configuration 10" 2 way Frequency response 60Hz – 18 kHz Normal coverage – 90 degrees conical Max SPL 126dB peak
Sidefill	2 x Quest QM108 Powered by Quest Amp Configuration 8" 2 way Frequency response 80-20kHz

Ancillary Audio Equipment (Microphones & Other)

6 x Shure SM58 corded	Dynamic vocal mic
2 x Shure Beta 58A corded	Dynamic vocal mic
2 x Shure Beta 58A wireless	Dynamic vocal mic
6 x Shure SM57 corded	Dynamic instrument mic
2 x Sennheiser e614 corded	Condenser pencil mic
1 x Shure microflex lectern mic	Gooseneck Microphone for lectern
1 x Shure Beta 52A corded	Kick drum mic
6 x Behringer DI100 DI Boxes	
1 x Radial JDI Stereo DI Box	
8 x K&M Microphone Boom Stands	211/1
5 x Short Boom Microphone Stands	
4 x Round Base Microphone Stands	
1 x CD Player	Denon DN-C620 (rack mounted)
Leads	Male to female XLR leads available.
Stools	3 x round black stools available for stage

Additional Equipment

Talk Back

Jands Ezicom (E401) master station with 4 talkback loops. All belt packs and headsets are wired. All connect to the loop via wall patches throughout the venue.

4 x Jands E101 belt packs

5 x Jands EH51 headsets

Program Relay

CCTV Camera (Samsung SCB-6000) – colour, analogue, PAL located in the control room.

Stage visual feeds to dressing rooms, green room and foyer televisions.

Paging

Paging available at reception desk or Bowery control room. Paging can be zoned throughout the venue or to individual zones (theatre, green room, loading dock and/or dressing rooms).

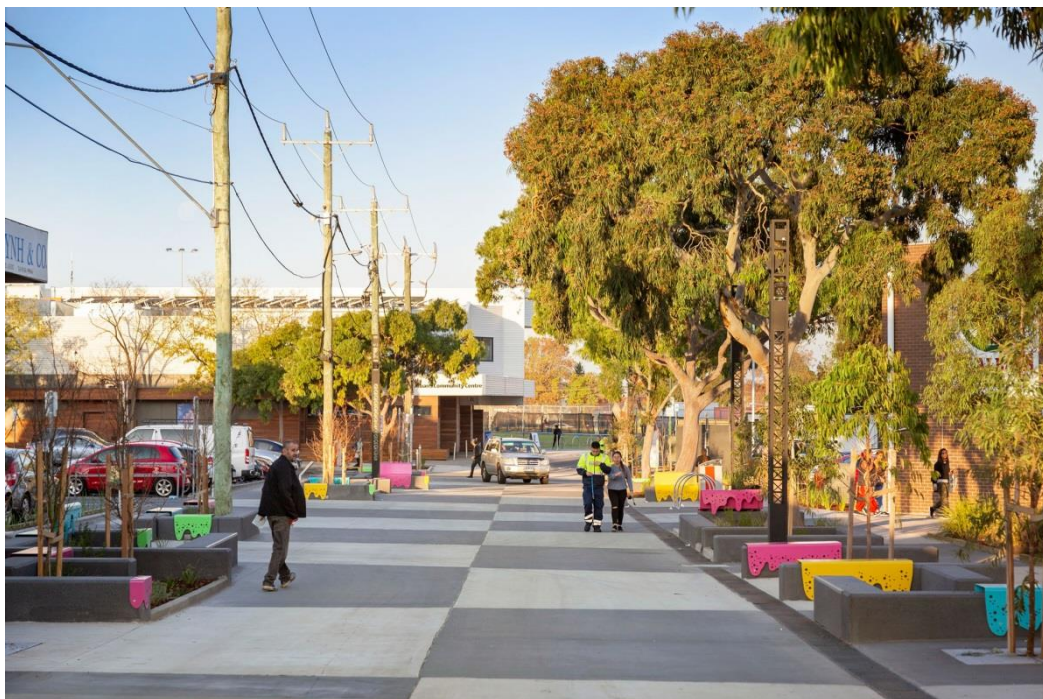
Access Equipment

JLG MVL20 self-drive EWP is available. Yellow card required to operate under Head Tech supervision.

Loading Dock

Located off Princess Street, ground level roller door (1.9m wide x 2.2m high). Will accommodate a station wagon or 1 tonne van comfortably. 3 tonne truck is possible with prior discussion with venue.

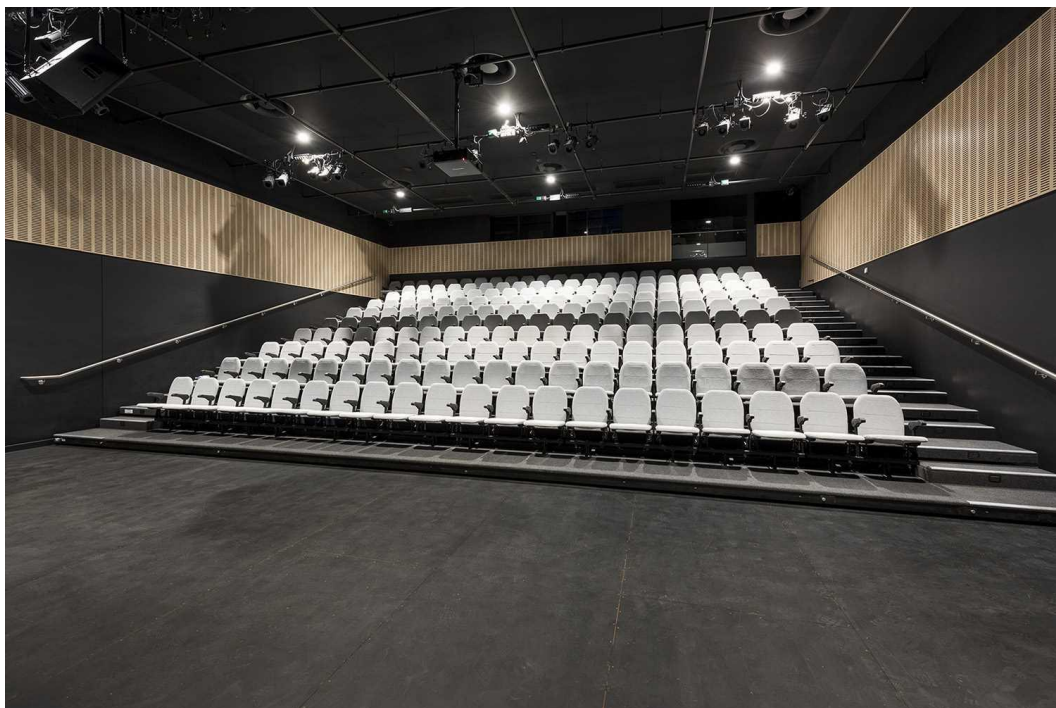
Photos and Plans



Princess Street, St Albans (view of St Albans Community Centre from St Albans Road)



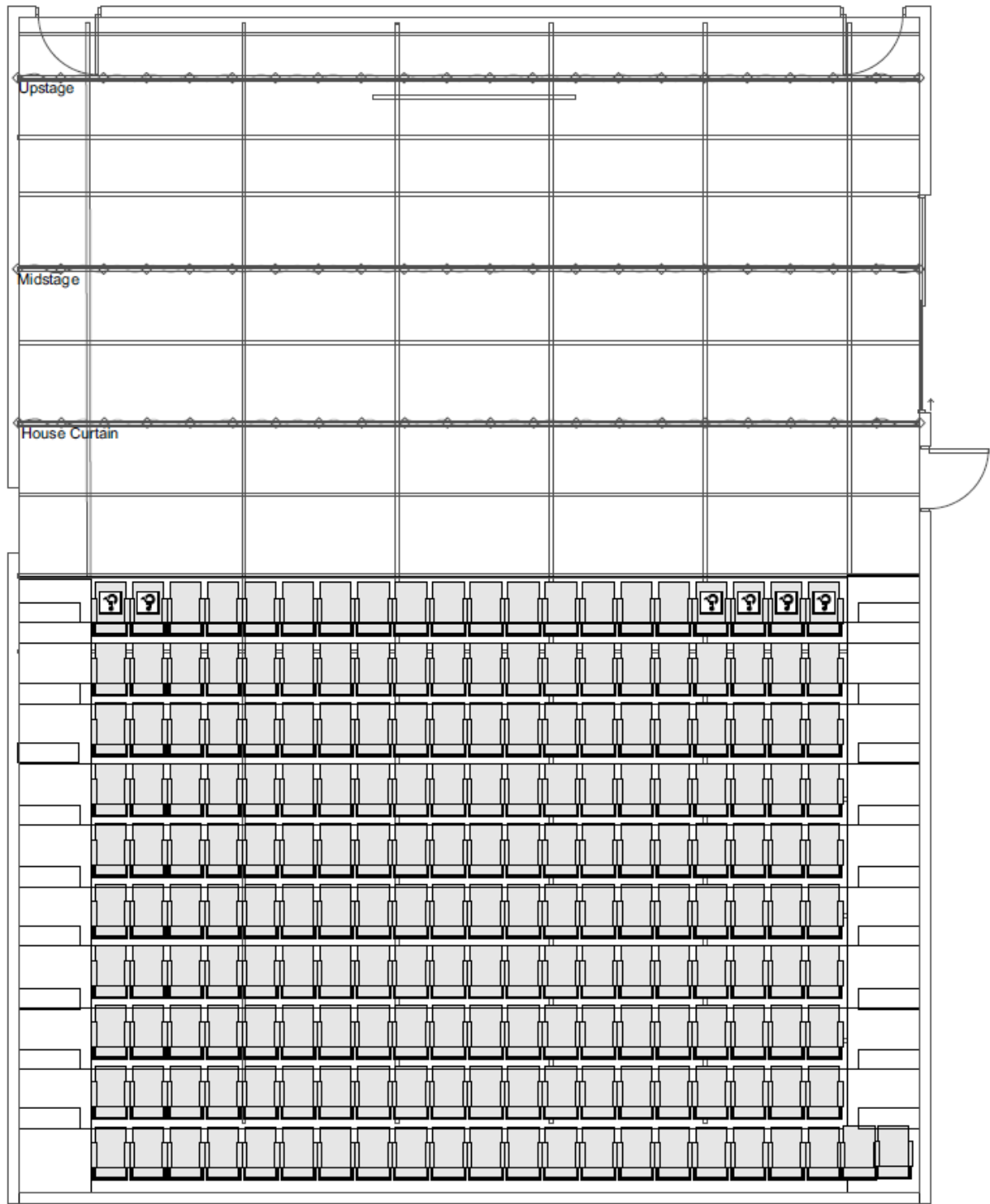
St Albans Community Centre



Bowery Theatre – Seating bank extended



Bowery Theatre – Seating bank retracted



Bowery Theatre seating bank and grid plan. For scaled plans or the current standard rig, please get in touch with the venue.