

# BOWERY



## **BOWERY THEATRE**

### **Technical Specifications**

The Bowery Theatre

St Albans Community Centre

33 Princess Street, St Albans Vic 3021

03 9249 4600

Technical specifications for the Bowery Theatre may change without notice.  
As of Feb 2023.

## Technical Specifications

### Contents

Stage Material.....	2
Stage Dimensions.....	2
Seating .....	2
Seating Bank Accessibility .....	3
Seating Arrangements / Venue Flexibility .....	3
Dressing Rooms.....	3
Laundry Facilities.....	3
Green Room .....	4
Drapery .....	4
Cyclorama .....	4
Grid.....	4
Lighting.....	5
Console.....	5
Dimmers.....	5
Light Fixtures.....	5
Audio Visual .....	6
Sound .....	7
Console.....	7
Ancillary Audio Equipment (Microphones & Other).....	8
Additional Equipment .....	9
Talk Back .....	9
Program Relay.....	9
Paging.....	9
Access Equipment.....	9
Loading Dock.....	9
Photos and Plans.....	9

### **Stage Material**

<b>Floor</b>	Stage black, flat, sprung floor. Weathertex 9.5mm wooden sheeting (3.6m x 1.2m sheets)
<b>Uniform Distributed Load</b>	750kg/square metre and 10kN point load.
<b>Tarkett</b>	Black that covers the stage floor

### **Stage Dimensions**

Black Box style performance space. Seating bank can be extended or retracted for versatile use of the venue. The standard rig comes without masking.

<b>Maximum Stage Space</b> (without masking –upstage wall to seating bank [L] and leg to leg [W]).	7.5m (L) x 8.4m (W)
<b>Stage Space</b> (with masking – measured house curtain to rear tab [L] and leg to leg [W])	5m (L) x 8.4m (W)
<b>Venue Space – wall (L) to wall (W)</b> (includes auditorium when seating bank is retracted)	16.5m (L) x 12.4m (W)
<b>Auditorium/Seating Space</b> (front edge of seating bank to back wall of auditorium)	7.74m (L) x 12.4m (W)

### **Seating**

202 seats on a tiered/raked retractable seating bank. Seating bank CANNOT be partially retracted.

<b>Extended Seating Bank</b> (measured front end of seating bank to back wall [L] and wall to wall [L])	8.8m (L) x 12.35 (W)
<b>Stored Depth</b> (front of seating bank to back wall when retracted)	1.4m (L) x 12.35m (W)
<b>Height of Rear Platform</b> (top level to auditorium floor)	2.85m (H)

### Seating Bank Accessibility

<b>Ground Floor</b>	Flat floor from the foyer into the theatre. Three wheelchair positions are available in Row A. Two seats remove on OP for 1 wheelchair space and 4 seats remove on PS for 2 wheelchair spaces.
<b>Seating Bank steps</b>	There is one step up from ground level onto the seating bank, and steps between each row thereafter.
<b>First Floor</b>	There is a lift from ground floor to first floor in the foyer. After entering the theatre from the top door, there are steps down into the seating bank.

### Seating Arrangements / Venue Flexibility

There is no access to the auditorium from the first floor when the seating bank is retracted.

<b>Seating Bank</b> General admission or assigned seating options available Seating bank fully extended	202 seats
<b>Cabaret Style</b> Seating bank fully retracted	80 – 120 (approximate number – capacity depends on furniture sizes)
<b>Standing Room</b> Seating bank fully retracted	220 (legal capacity in the venue with no seating bank, no stage)

### Dressing Rooms

2 x dressing rooms. Each dressing room is equipped with a toilet, shower, mirrors, overhead make up lights, costume racks, show audio relay and paging and a show relay monitor.

<b>Dressing Room 1</b>	Up to 5 people (3.1m x 0.5m table space)
<b>Dressing Room 2</b>	Up to 6 people (4m x 0.5m table space)

### Amenities

#### Laundry Facilities

Front load washer, front load dryer, sink, ironing board and iron.

### Green Room

Filtered water, on-demand boiling water, temperature control, microwave, bar fridge/freeze and kettle.

Paging, show relay monitor and free to air TV.

### Drapery

<b>House Curtain</b>	6.9m (W) x 5.5m (L) (x2 – split at centre) 0.4m central overlap Black wool – 50% fullness French action – hand operated from DSPS
<b>Stage Tabs (travellers)</b>	Upstage and midstage 6.5m (W) x 5.5m (L) (x2 – split at centre) 0.4 m central overlap Black wool – 50% fullness French action – hand operated from PS.
<b>Masking</b> Masking is not included in the standard rig. Available upon request.	On tracks and rotators when installed - static 2m (W) x 5.5m (L) (x4 pairs) Black wool – 50% fullness

### Cyclorama

White filled cloth. Tied to the most US bar in the grid. Hangs from grid to stage and can cover the entire length of the back wall. Standard rig: the cyc is folded back to not obstruct the US entry doors. There is a 300 mm (H) x 9600 mm (W) black wooden ground row fascia masking bottom pocket of the cyc. There is a flat black wool border 300 mm (H) x 12400 mm (W) at the top of the cyc.

### Grid

<b>Fixed grid</b>	5.3m (H) stage to grid 5.9m (H) stage to ceiling
	6 x 13 LX bars (see plans)
	4 x LX bars with power, lighting and audio patching, green power and data (2 FOH and 2 onstage)
<b>Safe Working Load</b>	50kg loading per linear metre and 250kg load per pipe

## Lighting

### Console

ETC ION XE20 2K Lighting Console with 2048 Outputs/Parameters & 20 inbuilt Faders  
Monitors – 2 x Dell 24" Touchscreens

1024 DMX Channels

Protocol – DMX512 over STP data cabling

4 x DMX splitter split over 4 universes – Ethercon RJ45 compatible (10 x outputs)

### Dimmers

6 x LSC Gen VI Dimmers (72 x 2500 VA capacity [2.5kW])

Capable of hot power or dimmable power

Patch Panel – 96 x piggyback plugs (10 amps each)

### Light Fixtures

All lamps have safety chains, hook clamps and piggy back power leads.

<b>14 x Selecon Acclaim Axial Zoomspot Profiles</b>	600w 22/44 beam angle with gel frames and shutters
<b>10 x ETC Source 4 Juniors Zoom Profile</b>	575w 25-50 beam angle with gel frames and shutters
<b>12 x Selecon Acclaim Fresnels</b>	650w 6-60 beam angle with gel frames and barn doors
<b>12 x Par 16 Birdies</b>	240v With gel frames
<b>12 x Chauvet Slimpar Pro</b>	LED RGBWA+UV With gel frames
<b>4 x Movers</b>	Chauvet 475Z zoom Spot-Intimidator
<b>16 x ProShop LEDNIT Par Tri-12</b>	LED RGBA
<b>10 x ShowPro LEDCYC100 Units</b>	LED RGBWA
<b>16 x Chauvet Freedom Flex H4 IP</b>	LED RGBWA+UV
<b>18 x Chauvet Slimbank T18</b>	Tri-Color RGB
<b>2 x Pin spots beamz 12w</b>	LED RGB
<b>1 x hazer</b>	Martin/Jem compact hazer Pro
<b>Smoke Machine</b>	1 x Jem ZR 25 fogger
<b>Mirror Ball</b>	24" with motor on a hook clamp
<b>Booms</b>	6 x booms 8 x Boom arms 8 x Single clamp boom arm 0.5m Black 2 x Dropper pole 2m

## **Audio Visual**

<b>Projector</b>	1 x 7000 ANSI Digital Projector (Panasonic PT-DW750ES) with Ultra short throw lens attached (standard lens option in storage)
	Resolution – WXGA (1920 x 1200)
	Input connections – HDMI, VGA via Crestron control RS232 LAN.
<b>Projection Screen</b> Available upon request only. Standard projection onto cyc.	1 x Motorised Video Screen (Technics Electricinema) 150" (381cm), remote control and contact closure
<b>DVD Player</b> 1 x Panasonic DP-UB420 Ultra HD Blu-ray Playback (4K/HDR)	2 x HDMI Output 2 x USB Ports Wifi and LAN
<b>Vision Switcher</b> 1 x ROLAND V-40HD  4 x Multi-Format Channels from 12 x Inputs HDMI / Component / Composite Inputs	<b>Inputs</b> 4x HDMI Type A 4x RGB/Component on HD DB-15 4x Composite on BNC 1x 1/4" TRS phone type balanced/unbalanced pair  1x Tally on HD DB-15 (max input: 12 V/200 mA, open collector type) 2x MIDI on 5-pin DIN (In / Out / Thru) 1x RS-232C on 9-pin D-sub 1x USB type A (host, for USB storage)\
<b>Filming Equipment</b> 2 x Panasonic HC-PV100  <b>Tripods</b> 2 x Manfrotto Kit Video 190XV  <b>Camera Audio</b> 2 x Sony Electret Condenser Mic 2 x Sennheiser XSW-D Lavalier Set	<b>Inputs</b> 2 x XRL <b>Outputs</b> 1 x HDMI 2 x SD Card reader   - Super-Cardioid - Omni-Directional

## **Sound**

### **Console**

Yamaha QL1 Digital Console  
 32 x analogue balanced mono inputs  
 16 x faders (32 channels)  
 16 x Outputs  
 USB Playback and recording

### **Recording Audio**

Zoom H6  
 4 x XLR/TRS inputs (Stereo feed from the Yamaha QL1)  
 1 x Shotgun Mic (SGH-6)  
 1 x MS Stereo Mic (MSH-6)  
 1 x XY Stereo Mic (XYH-6)

The Bowery Theatre is capable of 5.1 surround sound. This must be discussed with the technical team.

<b>FOH Speakers</b>	2 x QSC KW 152 Speakers Configuration 15" 2 way Frequency response (-6dB) 47Hz – 18Hz Nominal coverage – 60 degrees axisymmetric Maximum SPL – 133dB peak
<b>Subwoofer</b>	1 x QSC KW181 1000w powered subwoofer Frequency response (-10dB) 37Hz to 129Hz Maximum SPL1 – 135 dB peak Available upon request
<b>Fold back</b>	4 x QSC K10 Configuration 10" 2 way Frequency response 60Hz – 18 kHz Normal coverage – 90 degrees conical Max SPL 126dB peak  2 x QSC K10.2 Configuration 10" 2 way Frequency response (-6dB) 56Hz – 20 kHz
<b>Side fill</b>	2 x Quest QM108 Powered by Quest Amp Configuration 8" 2 way Frequency response 80-20kHz
<b>Bio Audio monitoring</b>	1 x QSC 8 inch powered speaker



### Ancillary Audio Equipment (Microphones & Other)

<b>6 x Shure SM58 corded</b>	Dynamic vocal mic
<b>2 x Shure Beta 58A corded</b>	Dynamic vocal mic
<b>6 x Shure SM57 corded</b>	Dynamic instrument mic
<b>3 x Sennheiser e614 corded</b>	Condenser pencil mic
<b>1 x Shure microflex lectern mic</b>	Gooseneck Microphone for lectern
<b>1 x Shure Beta 52A corded</b>	Kick drum mic
<b>4 x Sennheiser E904</b>	Clips for drums
<b>2 x Sennheiser E906</b>	
<b>2 x Shure Beta 58A wireless</b>	Dynamic vocal mic
<b>7 x Sennheiser e 845 (super cardioid dynamic)</b>	Wireless Mics
<b>6 x SK 100 G4 body packs</b>	Body packs for lapel/headset/wireless instrument hook-up
<b>6 x JAG IMX6A Headset</b>	This connects to the Body packs
<b>2 x Sennheiser Passive Directional paddle 450 - 960 MHz</b>	
<b>2 x Sennheiser Active 4 way diversity antenna splitter</b>	
<b>6 x Behringer DI100 DI Boxes</b>	
<b>1 x Radial JDI Stereo DI Box</b>	
<b>1 x Radial USB-Pro Stereo USB Laptop Direct Box</b>	
<b>2 x K&amp;M Large Microphone Boom Stands</b>	
<b>8 x K&amp;M Microphone Boom Stands</b>	
<b>5 x Short Boom Microphone Stands</b>	
<b>2 x Extra Short Boom Microphone Stands</b>	
<b>4 x Round Base Microphone Stands</b>	
<b>1 x CD Player</b>	Denon DN-C620 (rack mounted)
<b>Leads</b>	Male to female XLR leads available.
<b>Stools</b>	3 x round black stools available for stage

## **Additional Equipment**

### **Talk Back**

Jands Ezicom (E401) master station with 4 talkback loops. All belt packs and headsets are wired. All connect to the loop via wall patches throughout the venue.

4 x Jands E101 belt packs

5 x Jands EH51 headsets

### **Program Relay**

CCTV Camera (Samsung SCB-6000) – colour, analogue, PAL located in the control room.

Stage visual feeds to dressing rooms, green room and foyer televisions.

### **Paging**

Paging available at reception desk or Bowery control room. Paging can be zoned throughout the venue or to individual zones (theatre, green room, loading dock and/or dressing rooms).

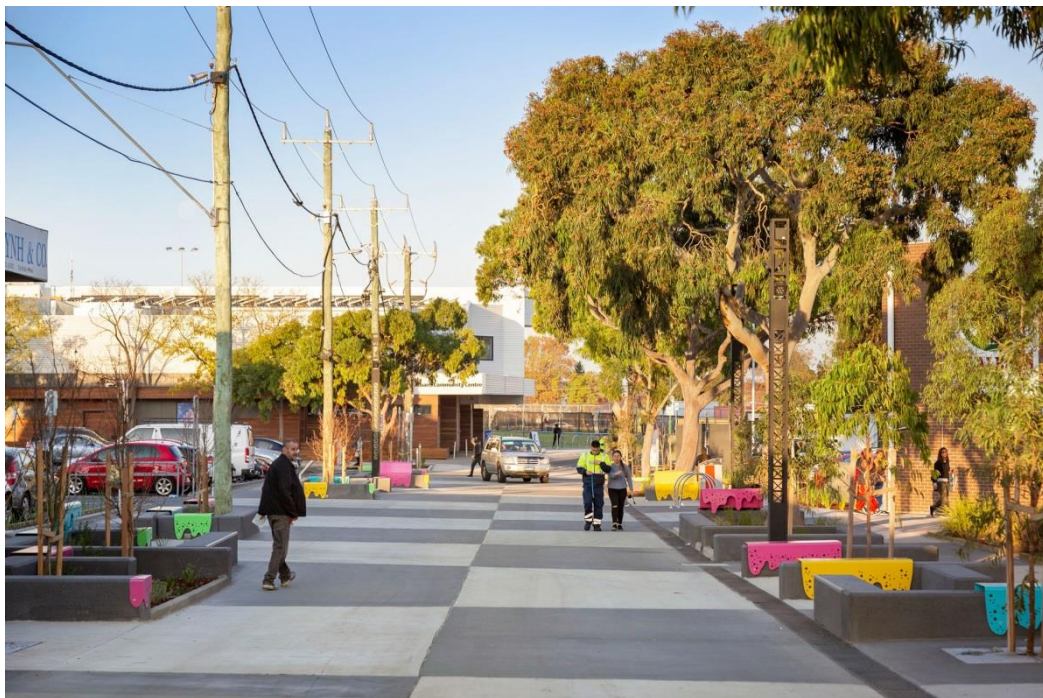
### **Access Equipment**

JLG MVL20 self-drive EWP is available. Yellow card required to operate under Head Tech supervision.

## **Loading Dock**

Located off Princess Street, ground level roller door (1.9m wide x 2.2m high). Will accommodate a station wagon or 1 tonne van comfortably. 3 tonne truck is possible with prior discussion with venue.

## **Photos and Plans**



Princess Street, St Albans (view of St Albans Community Centre from St Albans Road)

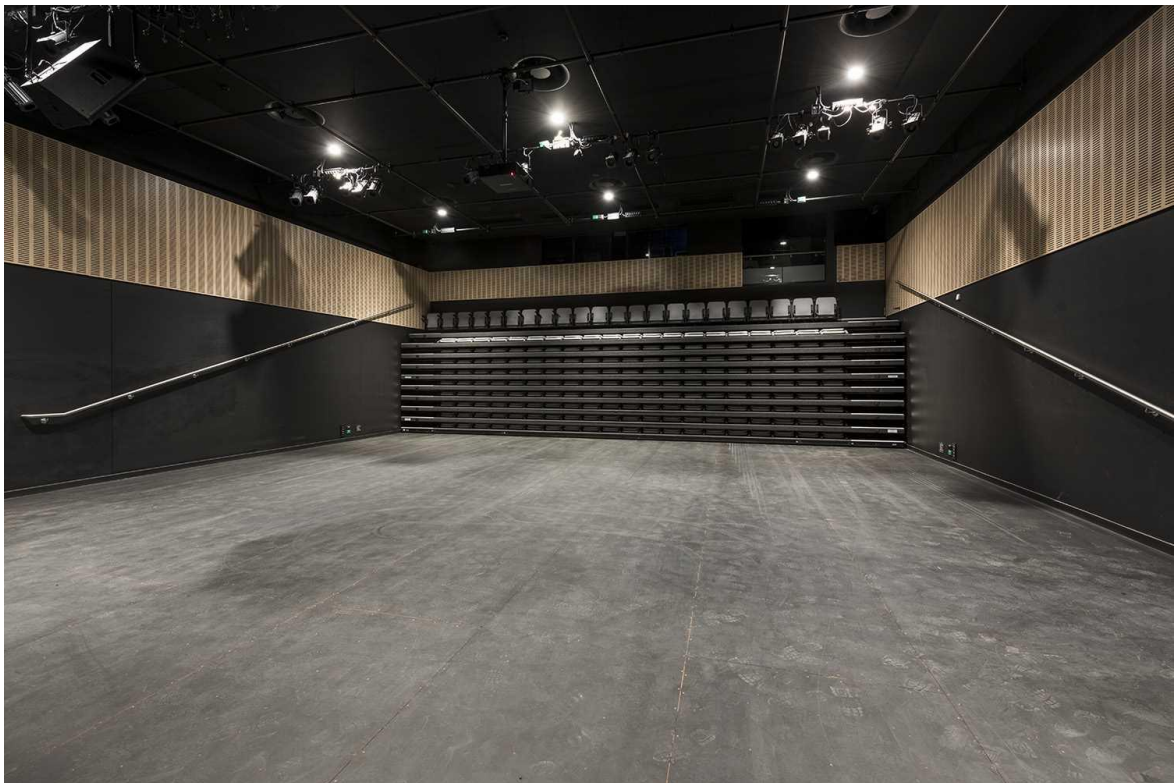


St Albans Community Centre

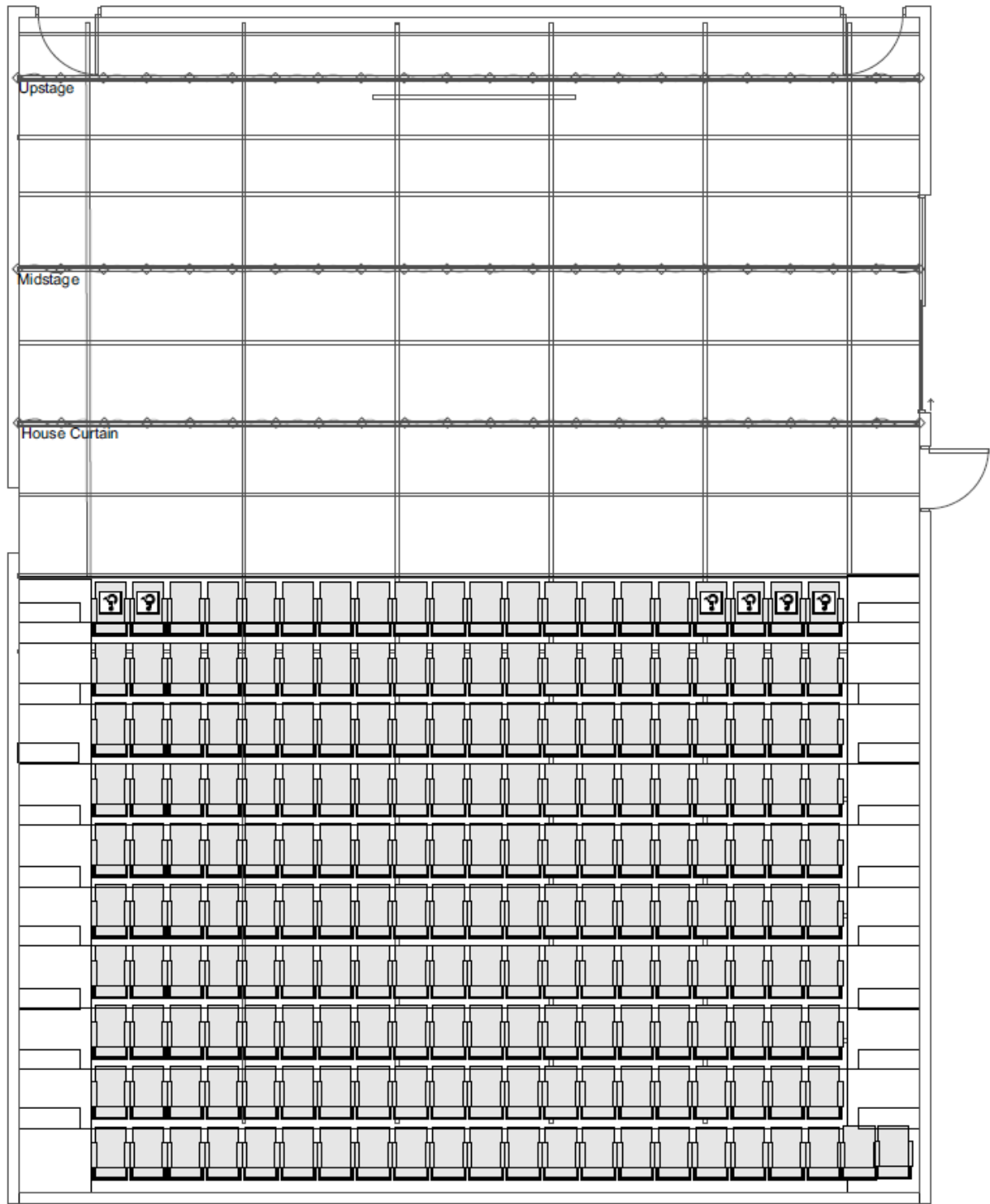




Bowery Theatre – Seating bank extended



Bowery Theatre – Seating bank retracted



Bowery Theatre seating bank and grid plan. For scaled plans or the current standard rig, please get in touch with the venue.